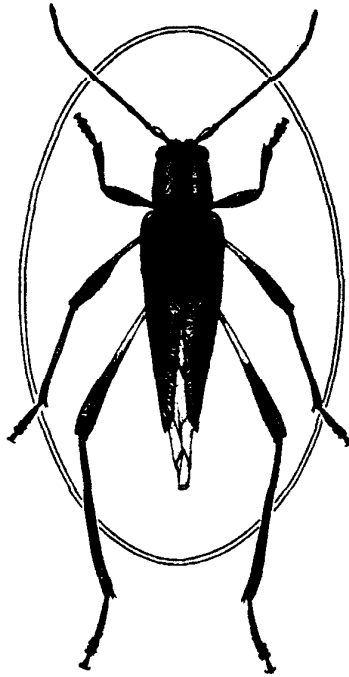


ISSN 0073-134X

**PROCEEDINGS  
OF THE  
HAWAIIAN  
ENTOMOLOGICAL  
SOCIETY**



---

**Volume 36**

**December 2003**

Proceedings of the Hawaiian Entomological Society, Volume 36, December 2003

Table of Contents

Minutes, officers, membership, 2001–2002 .....	i
In memorium: Frederick August Bianchi .....	v
Todd Shelly	
Exposure to Ginger Root Oil Induces Male-Like Courtship Behavior in Female Mediterranean Fruit Flies (Diptera: Tephritidae) .....	1
Gary C. Jahn, John W. Beardsley, Hector González-Hernández	
A Review of the Association of Ants with Mealybug Wilt Disease of Pineapple .....	9
Andrei V. Alyokhin, Russell H. Messing	
Parasitism of Hawaiian Non-Frugivorous Fruit Flies (Diptera: Tephritidae) by an Exotic Parasitoid, <i>Eurytoma tephritidis</i> Fullaway (Hymenoptera: Eurytomidae) .....	29
Charles G. Jackson, Roger I. Vargas, David Y. Suda	
Populations of <i>Bactrocera cucurbitae</i> (Diptera: Tephritidae) and Its Parasitoid, <i>Psytalia fletcheri</i> (Hymenoptera: Braconidae), in <i>Coccinia grandis</i> (Cucurbitaceae), or Ivy Gourd, on the Island of Hawaii .....	39
Stephan G. Lee, Susan D. McCombs, Stephen H. Saul	
Sperm Precedence of Irradiated Mediterranean Fruit Fly Males (Diptera: Tephritidae) .....	47
Stephan G. Lee, Susan D. McCombs, Stephen H. Saul	
Factors Affecting the Occurrence of Second Copulation by Mediterranean Fruit Fly Females (Diptera: Tephritidae) .....	61
Ernest J. Harris, Nicanor J. Liquido, Clifford Y.L. Lee	
Patterns in Appearance and Fruit Host Utilization of Fruit Flies (Diptera: Tephritidae) on the Kalaupapa Peninsula, Molokai, Hawaii .....	69
Robert G. Hollingsworth	
Life History Observations on <i>Thrips florum</i> (Thysanoptera: Thripidae) Infesting Gardenia in Hawaii, and a Comparison of the Humidity Requirements for <i>T. florum</i> and <i>Frankliniella occidentalis</i> .....	79
Peter A. Follett, Shannon DeLuz, Robert A. Lower, Donald K. Price	
Suitability of Lychee Fruits On and Off the Tree for <i>Cryptophlebia</i> spp. (Lepidoptera: Tortricidae) .....	89
Pingjun Yang, Roy Furumizo, Leroy Tangalin, Clyde Takekuma, Kenneth E. Hall	
Mosquito (Diptera: Culicidae) Species Breeding in Bromeliad Axils on the Island of Kauai, Hawaii .....	95
Thomas W. Culliney	
Survey for Parasitic Honey Bee Mites in Hawaii (Acariformes: Tarsonemidae; Parasitiformes: Laelapidae, Varroidae) .....	103
Russell Messing, Andrei Alyokhin, Lin-nai Quan, Chen Yiqun, Fang Xiongxi	
Parasitoids of <i>Sophonia</i> Leafhoppers in Southern China .....	111
Mohsen M. Ramadan, Russell H. Messing	
A Survey for Potential Biocontrol Agents of <i>Bactrocera cucurbitae</i> (Diptera: Tephritidae) in Thailand .....	115
R. Muniappan, G.V.P. Reddy	
Fortuitous Introduction of Two Natural Enemies of <i>Lantana camara</i> to Chuuk .....	123
R.H. Miller, O. Idechiil, R.G. Footit, K.S. Pike	
<i>Uroleucon formosanum</i> (Takahashi) (Homoptera: Aphididae) Found on <i>Youngia japonica</i> (L.) DC on Guam and Rota in the Mariana Islands .....	125
Glenn Y. Taniguchi, Asher K. Ota, Michael K. Kawate, Kenneth G. Rohrbach, Grant K. Uchida	
Preliminary Field Tests on the Suitability of Amdro™ and Distance™ in Ant Bait Container for Control of the Big-Headed Ant, <i>Pheidole megacephala</i> (Hymenoptera: Formicidae) .....	129
Grant K. Uchida, Donald O. McInnis, Roger I. Vargas, Bernarr R. Kumashiro, Eric Jang	
Nontarget Arthropods Captured in Cue-lure-Baited Bucket Traps at Area-Wide Pest Management Implementation Sites in Kamuela and Kula, Hawaiian Islands .....	135
Thomas W. Culliney, Walter T. Nagamine	
Introductions for Biological Control in Hawaii, 1997–2001 .....	145
Indexes .....	155

## SCIENTIFIC NOTE

**Fortuitous Introduction of Two Natural Enemies  
of *Lantana camara* to Chuuk****R. Muniappan<sup>1</sup> and G.V.P. Reddy**

Agricultural Experiment Station, College of Natural and Applied Sciences, University of Guam,  
Mangilao, Guam 96923, USA. <sup>1</sup>Author for correspondence; phone: 1-671-735-2142, fax: 1-671-734-  
6842, e-mail: rmoni@uog9.uog.edu

**Abstract.** *Ophiomyia lantanae* (Froggatt) and the *Calycomyza lantanae* Frick were recorded from *Lantana camara* L. in Chuuk Islands. Both of these agromyzids are native to tropical Americas and were not intentionally introduced and this is the second report of fortuitous introduction of natural enemies of *L. camara* into the Chuuk State possibly from Pohnpei State within the Federal States of Micronesia.

*Lantana camara* L. (Verbenaceae) was introduced to Micronesia probably as an ornamental plant. It is a native to the neotropical region and it has become a serious invasive weed in most of the tropical and subtropical countries in Africa, Asia and Oceania. It forms bushes and several bushes coalesce to form thickets. It grows in low islands of atolls to higher volcanic islands in the Pacific. In spite of its invasive properties it has been extensively used in the ornamental horticulture throughout the world. Holm et al (1977) consider it as one of the top ten noxious weeds in the world.

Since the beginning of the last century, biological control has been attempted in many parts of the world with varying degrees of success as different cultivars display differences in susceptibility to insect herbivores (Perkins and Swezey, 1924; Ramachandra Rao, 1920; Waterhouse and Norris, 1987).

Schreiner (1989) reported the absence of records of insects sent to Chuuk for biological control of lantana. However, Denton et al. (1991) reported the establishment of *Teleonemia scrupulosa* Stål (Hemiptera: Tingidae), *Uroplata girardi* Pic. (Coleoptera: Chrysomelidae), *Lantanophaga pusillidactyla* Walker (Lepidoptera: Pterophoridae), *Salbia haemorrhoidalis* Guenée (Lepidoptera: Pyralidae) and *Epinotia lantana* (Busck) (Lepidoptera: Tortricidae) and suggested that these insects were possibly introduced fortuitously from Pohnpei. In this paper we report further fortuitous establishment of two additional natural enemies in the Chuuk State.

In November 2002, one of the authors (RM) conducted a survey of *L. camara* natural enemies in the island of Wenu, Chuuk State of the Federal States of Micronesia and found establishment of the lantana seed fly, *Ophiomyia lantanae* (Froggatt) (Diptera: Agromyzidae) and the lantana leaf blotch miner, *Calycomyza lantanae* Frick (Diptera: Agromyzidae) in addition to the occurrence of all the natural enemies recorded by Denton et al. (1991).

In November 2002 only a few plants were infested by *T. scrupulosa* near the village Peniesene. Both adults and larvae of *U. girardi* were found on lantana plants growing in the shades of trees at Tunuuk. Other natural enemies reported by Denton et al. (1991) were found in low numbers throughout the Weno island wherever lantana was present.

The lantana seed fly, *O. lantanae* was introduced to Pohnpei from Hawaii in 1948 (Bryan, 1949). Denton et al. (1991) who surveyed lantana natural enemies in Micronesia confirmed

its establishment in Pohnpei but did not find it in Chuuk Islands. The lantana leaf blotch minor *C. lantanae* was introduced to Guam from Australia in 1992 (Muniappan et al. 1992) and then from Guam to Pohnpei in 1995 (Esguerra et al., 1997). In this survey, it has been noted that both insects are well established in Weno Island of the Chuuk State, possibly introduced from Pohnpei as was the case with the introduction of other natural enemies of lantana. Fortuitous establishment of natural enemies of lantana introduced to Pohnpei in Chuuk seems to be a very common phenomenon, indicating the need for vigorous enforcement of plant quarantine regulations in this state especially movement of plants from the neighboring state Pohnpei.

#### Literature Cited

- Bryan, E.H.** 1949. Economic insects of Micronesia. Report of the insect control committee for Micronesia 1947-1948. (Washington, DC: National Research Council).
- Denton, G.R.W., R. Muniappan and M. Marutani.** 1991. Status and natural enemies of the weed, *Lantana camara*, in Micronesia. *Trop. Pest Manag.* 37: 338-344.
- Esguerra, N.M., K.J. Diopulos, R.P. Samuel and J.D. William.** 1997 Establishment of the leaf mining fly, *Calycomyza lantanae* Frick. on the weed *Lantana camara* L. on Pohnpei. *Micronesica* 30: 427-419.
- Holm, L., Plucknett, D.L., Pancho, J.V. and Herberger, J.P.** 1977. *The World's Worst Weeds*. Distribution and Biology (Honolulu, Hawaii: University Press of Hawaii), 609 p.
- Muniappan, R., T.S. Lali and D. Afaisen.** 1992. Establishment of *Calcomyza lantanae* Frick on Guam for control of the weed lantana. *Micronesica* 25: 217-218.
- Perkins, R.C.L. and O.H. Swezey.** 1924. The introduction into Hawaii of insects that attack lantana. *Bulletin of the Experimental Station, Hawaiian Sugar Planters Association*. 83 p.
- Ramachandra Rao, Y.** 1920. Lantana insects in India. *Memoirs, Department of Agriculture in India, Entomology Series, Calcutta* 5: 239-314.
- Schreiner, I.** 1989. Biological control introductions in the Caroline and Marshall Islands. *Proc. Hawaii. Entomol. Soc.* 29: 57-70.
- Waterhouse, D.F. and K.R. Norris.** 1987. *Biological Control: Pacific Prospects*. Inkata Press, Melbourne, pp.355-372.